

# KEL-JUMBO flex pyramid cable entry grommets

for single cables with diameters up to 68 mm / IP54 / UL Type 12



The KEL-JUMBO flex is a flexible cable entry grommet for cables without connectors with a diameter range from 27 - 68 mm. They are ideal for the routing supply cables into the switch cabinets.

It is recommended that additional strain relief be provided for cables using cable ties.

**Cutting of KEL-JUMBO flex grommets:** Cable diameter less 25%. The corresponding diameters are marked on the grommet.

IP54

UL TYPE  
12

C  
UL  
US

RI  
A

HL3  
EN 45545-2

EN 61373

ECOLAB  
certified

UV  
ISO 4892-2A

RoHS  
compliant

REACH  
COMPLIANCE

Made in  
Germany

## Specifications

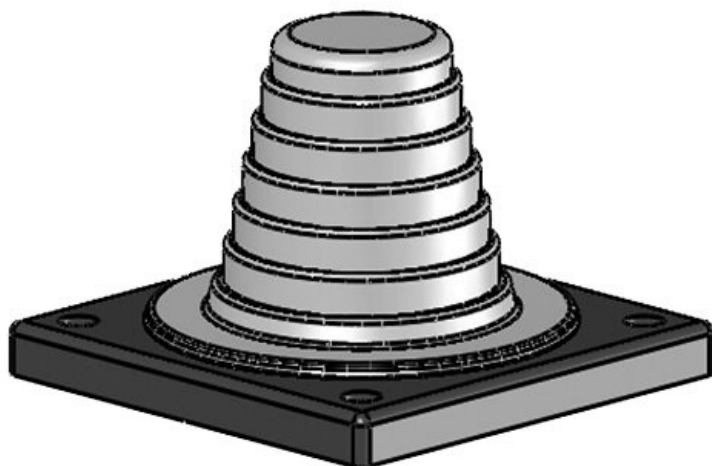
IP rating (EN 60529)	IP54
UL Type (UL 50E)	UL Type 12
Material	Elastomer Base frame: Polyamide
Flame class	UL94-V0, self-extinguishing
Operating temperature	-40 C° to 100 C°
Properties	halogen free, silicone free
Mounting options	Screw type mounting

## Advantages & benefits

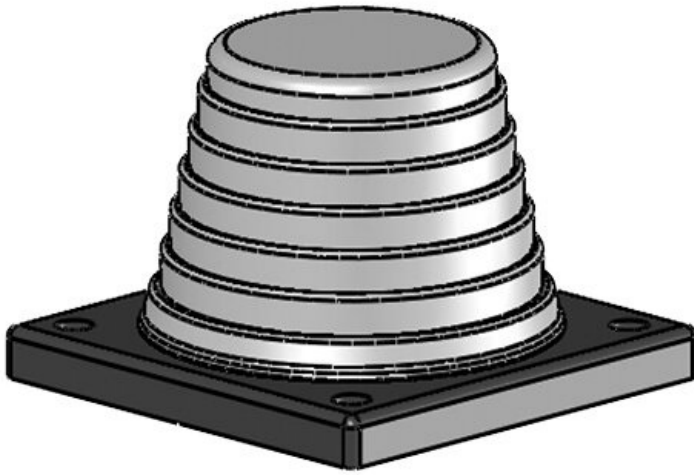
- It is possible to install rigid cables at angles
- Compact installation area (88 × 88 mm)

## Product types & sizes

KEL-JUMBO flex 27-48 gy



Part No.	<b>42614</b>	Width	<b>88 mm</b>
EAN	<b>4251269309</b>	Height	<b>62 mm</b>
	<b>021</b>	Mounting height	<b>62 mm</b>
Package quantity	<b>1</b>	Cut-out size, round	<b>57,6 mm</b>
For max. no. of cables	<b>1</b>	No. of screw holes	<b>4</b>
Max. cable diameter	<b>48 mm</b>	Diam. of screw holes	<b>6,9 mm</b>
Colour	<b>grey (similar RAL 7035)</b>	Clamping range	<b>27 - 48 mm</b>
Length	<b>88 mm</b>	Clamping range	<b>1 x 27 - 48 mm</b>



Part No.	<b>42616</b>	Width	<b>88 mm</b>
EAN	<b>4251269309038</b>	Height	<b>62 mm</b>
Package quantity	<b>1</b>	Mounting height	<b>62 mm</b>
For max. no. of cables	<b>1</b>	Cut-out size, round	<b>75,5 mm</b>
Max. cable diameter	<b>68 mm</b>	No. of screw holes	<b>4</b>
Colour	<b>grey (similar RAL 7035)</b>	Diam. of screw holes	<b>6,9 mm</b>
Length	<b>88 mm</b>	Clamping range	<b>47 - 68 mm</b>
		Clamping range	<b>1 x 47 - 68 mm</b>